

A solid red circle positioned to the left of the main title.

FS S3400 Series Switches Data Sheet

Contents

Product overview	3
Product highlights	3
Platform details	4
Platform benefits	9
Software requirements	10
Product specifications	10
Quality certification	12
Optics supported	12
Warranty, service and support	12
Ordering information	13
Additional information	13
Document history	13

I Product overview

Full gigabit Ethernet PoE+ switches are the new-generation intelligent access switches designed for enterprise networks, which can be used as Ethernet Power Sourcing Equipment (PSE). They can automatically identify the connected devices whether compatible with IEEE 802.3af or IEEE 802.3at standard and supply power for them. S3400-24T4SP is equipped with 24x 10/100/1000BASE-T ports, 4 x 10Gb SFP+, and 24x RJ45 ports that support both IEEE 802.3af PoE and IEEE 802.3at PoE+ (up to 30W per port) for powering attached IP phones, wireless access points, or other standards-compliant PoE and PoE+ end network devices.

S3400-24T4SP is a next-generation aggregation 10GE switch. It is targeted at the IP MAN (metropolitan area network), government and enterprise networks, Internet café, and diskless working environment. It supports functions such as powerful ACL, flexible QinQ, 1:1 or N:1 VLAN switching, Ethernet OAM, carrier-level QoS, and industry-level 10GE Ether-ring, ensuring this switch series meets application requirements in all kinds of complicated sites. It also supports layer-3 routing protocol.

S3400-24T4FP is equipped with 24x 10/100/1000BASE-T ports, 4x 1Gb RJ45/SFP combo, and 24x RJ45 ports that support both IEEE 802.3af PoE and IEEE 802.3at PoE+ (up to 30W per port) for powering attached IP phones, wireless access points, or other standards-compliant PoE and PoE+ end network devices. 4x RJ45/SFP combo ports meet the different network expand needs.

S3400-48T4SP is equipped with 48x 10/100/1000BASE-T ports, 4x 1Gb SFP/10Gb SFP+ uplinks, and 48x RJ45 ports that support both IEEE 802.3af PoE and IEEE 802.3at PoE+ (up to 30W per port) for powering attached IP phones, wireless access points, or other standards-compliant PoE and PoE+ end network devices. 4x SFP+ uplink ports are provided to support connections to higher layer devices.

S3400-48T6SP is equipped with 48x 10/100/1000BASE-T ports, 6x 1Gb SFP/10Gb SFP+ uplinks, 48x RJ45 ports support both IEEE 802.3af PoE and IEEE 802.3at PoE+ (up to 30W per port) for powering attached IP phones, wireless access points, or other standards-compliant PoE and PoE+ end network devices. 6x SFP+ uplink ports are provided to support connections to higher-layer devices.

These access switches deliver a compact, cost-effective solution for the carrier's IP MAN and enterprise networks. Based on the high-performance hardware and FSOS platform, it supports functions such as ACL, QinQ, and QoS. Its simple management mode and flexible installation can meet the requirement of any complicated scenario.

I Product highlights

- Support WEB/SNMP/SSH for Flexible Operation
- Network Monitoring through Sampled Flow (sFlow)
- Support SSH,ACL, AAA, 802.1X, RADIUS, TACACS+, etc. for Security
- Support ERPS, QoS, L2 Multicast Functions, DHCP Server, RIP, OSPFv2

Platform details

Switch models and configurations

Figures 1 through 3 show the FS S3400 series switches.

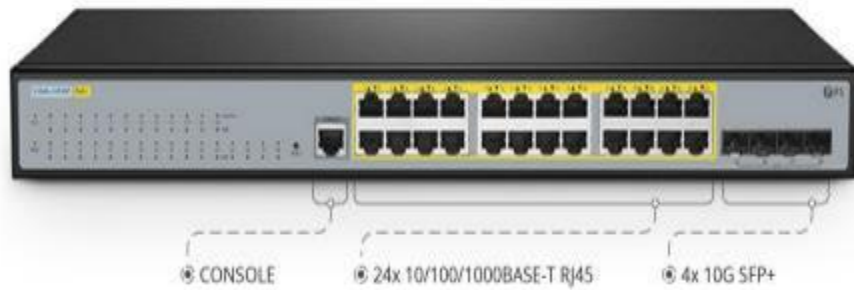


Figure 1.
S3400-24T4SP, 24-Port Gigabit Ethernet PoE Switch, 24 x PoE Ports @370W , with 4 x 10Gb SFP+ Uplinks, Support Stacking



Figure 2.
S3400-24T4FP, 24-Port Gigabit Ethernet L2+ PoE+ Switch, 24 x PoE+ Ports @370W , with 4 x 1Gb Combo Uplinks, Support ERPS



Figure 3.
S3400-48T4SP, 48-Port Gigabit Ethernet L2+ PoE+ Switch, 48 x PoE+ Ports @370W , with 4 x 10Gb SFP+ Uplinks, AC+DC Power Supplies

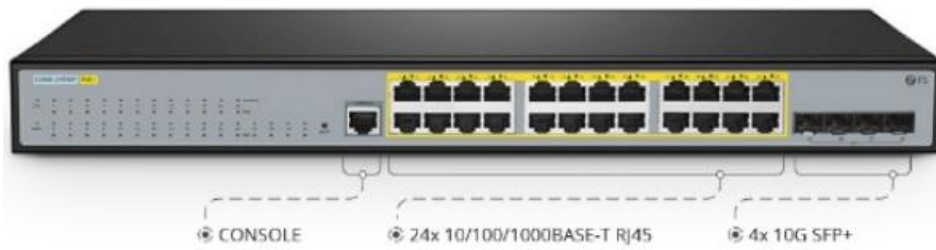


Figure 4.

S3400-48T6SP, 48-Port Gigabit Ethernet L2+ PoE+ Switch, 48 x PoE+ Ports @370W, with 6 x 10Gb SFP+ Uplinks, AC+DC Power Supplies

Switch configurations and port density

Table 1 shows the FS S3400 series configurations and port density.

Table1. switch configuration and port density

FS P/N	S3400-24T4SP	S3400-24T4FP	S3400-48T4SP	S3400-48T6SP
Description	S3400-24T4SP, 24-Port Gigabit Ethernet PoE Switch, 24 x PoE Ports @370W , with 4 x 10Gb SFP+ Uplinks, Support Stacking	24-Port Gigabit Ethernet L2+ PoE+ Switch, 24 x PoE+ Ports @370W , with 4x 1Gb Combo Uplinks , Support ERPS	48-Port Gigabit Ethernet L2+ PoE+ Switch, 48 x PoE+ Ports @370W , with 4 x10Gb SFP+ Uplinks, AC+DC Power Supplies	48-Port Gigabit Ethernet L2+ PoE+ Switch, 48 x PoE+ Ports @370W , with 6 x 10Gb SFP+ Uplinks, AC+DC Power Supplies
Port				
1Gportdensity	24	28	48	48
10Gportdensity	4	-	4	6
Management ports	1	1	1	1
Console port	1	1	1	1
USB port	1	-	-	1
Memory and processor				
Swth chip	RTL9301	RTL8382M	VSC7448	RTL9311
CPU	RTL9301	MIPS-4KEc	MIPS	RTL9311
RAM	256MB	128MB	256MB	512MB
DRAM	-	-	-	-
Flash memory	16 MB	16MB	16MB	16MB
Latency	Max: 4.28us; Min: 3.29us	Max: 3.89us; Min: 3.28us	Max: 92.2us; Min: 3.82us	Max: 1.6us; Min: 1.68us
Packet buffer	1.5MB	0.5MB	4MB	2MB

Note:

RJ45 ports can be used as 100M/ 1/2.5/5/ 10G ports for Ethernet connection , does not support 1G-T copper transceivers .

SFP+ ports can be used for 1/10G connection .

Power supplies and fans

Table 2 provides more details on the FS S3400 series power supplies and fan specifications .

Table2 power supply and fan specifications

Description	S3400-24T4SP	S3400-24T4FP	S3400-48T4SP	S3400-48T6SP
Power supply	1 Build-in	1 Build-in	2 (1AC+1DC)	2 (1AC+1DC)
Fan number	1+1 redundant fans	3 Built-in	4 Built-in	3 Built-in
Airflow	Left-to-Right	Left-to-Right	Left-to-Right	Left-to-Right
Acoustic noise	37 .5 dB	45dB	51 .8dB	34.1dB
Maximum fan speed	6000RPM±10%	6000RPM±10%	6200RPM±10%	6200RPM±10%
Max.power consumption	28W (370W with PoE)	20W (370W with PoE)	AC: 47W (400W with PoE) DC: 40W (400W with PoE)	AC: 61.5W (400W with PoE) DC: 50.5W (400W with PoE)
Power max rating	414W	414W	400W	AC:400W, DC:740W
Input-voltage range and frequency	AC: 100V-240V ,50-60Hz	AC: 100-240VAC,50-60Hz	AC: 100-240V, 50-60Hz, 6.5A DC: 36-72V, 1.7A	AC: 100-240V, 50-60Hz, 6.5A DC: 36-72V, 15A
Power supply efficiency	≥91%	≥91%	≥90%	≥91%
Input current	6A	6A	AC: 6.5A, DC: 1.7A	AC:6.5A, DC:15A
Output ratings	54V DC 12V DC	48V DC	AC: 53.5V, 7.5A DC: 48V (802.3af)/50V (802.3at), 4A	AC: 100-240V, 50-60Hz, 5.2A DC: 36-72V, 15A
Output holdup time	≥10 ms	≥ 10 ms Min	≥ 10 ms Min	≥ 10 ms Min
Power-supply input receptacles	C13	C13	C13	C13
Power cord rating	250V 10A	250V 10A	250V 10A	250V 10A
POE standard	IEEE 802 .3af/at	IEEE 802 .3af/at	IEEE 802 .3af/at	IEEE 802 .3af/at

POE power budget	370W	370W	AC: 370W DC: 370W	AC: 370W DC: 370W
------------------	------	------	----------------------	----------------------

Table 3 provides lists the power cord information.

Table3 Power cord information of S3400 Series Switches

Countries	Power Cord Standard	Male Plug	Female Connector	Voltage Compatibility	Maximum Input Amps
United States, Canada, Mexico, Puerto Rico, Guam, Japan, Virgin Islands (U.S.)	US	NEMA 5-15P	IEC60320 C13	100-250VAC	10A
United Kingdom, Hong Kong, Singapore, Malaysia, Maldives, Qatar, India	UK	BS1363	IEC60320 C13	100-250VAC	13A
Continental Europe, South Africa, Switzerland, Italy, Indonesia	EU	CEE 7	IEC60320 C13	100-250VAC	16A
China, Australia, New Zealand, Argentina	CN	GB16A	IEC60320 C13	100-250VAC	10A

Note:

Power cords are matched according to the delivery destination.

Stacking

The FS S3400 Series switch models are designed for stacking switches as a single virtual switch.

Table 4 lists the supported stacking options .

Table 4 supported stacking options

Part Name	S3400-24T4SP	S3400-24T4FP	S3400-48T4SP	S3400-48T6SP
stacking ports	2	-	-	2
Supported stack members	16	-	-	8
Maximum number of Llinks	16	-	-	8
Number of members	16	-	-	8

Switch performance

Table 5 shows performance specifications for the FS S3400 series switches.

Table 5. performance specifications

Performance for all S3400 Series Switches	S3400-24T4SP	S3400-24T4FP	S3400-48T4SP	S3400-48T6SP
Switching capacity	128 Gbps	56 Gbps	176 Gbps	216 Gbps
Forwarding rate	96 Mpps	56 Gbps	132 Mpps	162 Mpps
Total number of MAC addresses	16382	8K	32K	32764
Total number of IPV4 Routes (indirect routes)	128	128	500	512
Total number of IPV4 host routes (direct routes and ARP)	2000	384	1500	512
Total number of IPV6 Routes (indirect routes)	130	64	118	152
Total number of IPV6 host routes (direct routes and ARP)	1000	185	384	152
Total number of IPV4 multicast routes	1000	509	2048	1024
Total number of IPV6 multicast routes	1000	509	1024	1024
QoS ACL scale	1295	895	2048	ifp:2174 efp:768
Security ACL scale	1295	895	2048	ifp:2174 efp:768
VLAN IDs	4000	4000	4000	4000
STP virtual ports (port* VLANs) for MST	28	28	52	54
Total switched virtual interfaces (SVIs)	63	10	10	63
Jumbo frame	9K	9K	9K	9K

I Platform benefits

Table 6 lists the software spotlights for the FS S3400 series switches.

Table 6. software spotlights

Functionality	Description
Sound Security Protection Policies	<ul style="list-style-type: none"> Support to provide equipment-level security and level-based command line protection Support IEEE 802.1x, Radius and TACACS+ perfect security authentication mechanisms Support storm/multicast/unicast limit Support perfect ring detection mechanism Support port isolation, port security, MAC Sticky, DHCP-Snooping, and IP + MAC + Port binding Support SSH V1/2, HTTPS and SSL Support IP Source Guard, DoS Protection, Anti-attack from DDoS, TCP's SYN Flood and UDP Flood Support L2/L3/L4 ACL flow identification and filtration Support Ingress Egress Statistics Support IPv4/IPv6/MAC/ARP ACL
QoS	<ul style="list-style-type: none"> Support priority retagging and complicated flow classification Support to provide flexible bandwidth control policies Support multiple queue schedule algorithms such as SP, WRR and "SP + WRR" Support 802.1p, COS, DiffServ, DSCP, Tail-Drop and WRED Support Flow Monitoring and Traffic Shaping
Easy Network Maintenance	<ul style="list-style-type: none"> Support CLI via console port or Telnet Support Web management Support SNMP v1, v2c, v3 Support firmware upgrade and configuration file upload/download via TFTP/HTTP/FTP server Support dual images (SPAN, RSPAN), multiple configuration files Support firmware auto upgrade RMON Support MIB II, NTP, Ping, Traceroute and ZTP(Zero Touch Provisioning) Support LLDP (802.1ab)
IPv4/IPv6 Dual Protocol Stack	<ul style="list-style-type: none"> Support IPv4/IPv6 Dual Protocol Stack Support Unicast/Multicast IPv6 Address Type Support ICMPv6 Support IPv6 Neighbor Discovery and Snooping Support Manual Configuration Support IPv6 DHCP Snooping and MLD Snooping
High Reliability	<ul style="list-style-type: none"> Support IEEE 802.1D Spanning Tree Protocol (STP) Support IEEE 802.1w Rapid Spanning Tree Protocol (RSTP) Support IEEE 802.1s Multiple Spanning Tree Protocol (MSTP) Support BPDU Guard/filtering/transparent Support Root Guard and Loopback detection Support FTP, TFTP and SFTP
Strong Multi-Service Support Capability	<ul style="list-style-type: none"> Support 4K Active VLAN, voice VLAN, IEEE 802.1Q VLAN, Private VLAN and VLAN translation Support GVRP, QinQ & Selective QinQ Support IGMP Snooping, Link aggregation, DHCP, EAPS and ERPS Support Broadcast/Multicast/Unknown Unicast Storm Control Support 5 multicast VLANs Port mirroring and remote port mirror (RSPAN) Support Non-Spanning Tree Loopback detection Support Dynamic Arp Inspection, UDLD, OAM, CFM and Y1731 Support ISSU (In-Service Software Upgrade)

Software requirements

The FS S3400 Series Switches run on FS OS Software version.

Table 7 lists the latest software requirements for the switch models .

Table 7. Latest software requirements

FS P/N	Description	Latest software requirements
S3400-24T4SP	S3400-24T4SP, 24-Port Gigabit Ethernet PoE Switch, 24 x PoE Ports @370W , with 4 x 10Gb SFP+ Uplinks, Support Stacking	-
S3400-24T4FP	S3400-24T4FP, 24-Port Gigabit Ethernet L2+ PoE+ Switch, 24 x PoE+ Ports @370W , with 4 x 1Gb Combo Uplinks, Support ERPS	FSOS V2.2.0D_88680_Software
S3400-48T4SP	S3400-48T4SP, 48-Port Gigabit Ethernet L2+ PoE+ Switch, 48 x PoE+ Ports @370W , with 4 x 10Gb SFP+ Uplinks, AC+DC Power Supplies	FSOS V2.0.2J_95262_Software
S3400-48T6SP	S3400-48T6SP, 48-Port Gigabit Ethernet L2+ PoE+ Switch, 48 x PoE+ Ports @370W, with 6 x 10Gb SFP+ Uplinks, AC+DC Power Supplies	

Product specifications

Table 7 shows the product specifications for the FS S3400 series switches .

Table 7. product specifications

Description	S3400-24T4SP	S3400-24T4FP	S3400-48T4SP	S3400-48T6SP
Environmental				
Operating temperature	32°F to 122°F(0°C to 50°C)	32°F to 113°F (0°C to 45°C)	14°F to 122°F(-10°C to 50°C)	32°F to 113°F (0°C to 45°C)
Storage temperature	-40°F to 158°F (-40°C to 70°C)	-40°F to 158°F (-40°C to 70°C)	-40°F to 158°F (-40°C to 70°C)	-40°F to 158°F (-40°C to 70°C)
Operating humidity	10% to 90% (Non-condensing)	10% to 90% (Non-condensing)	10% to 90% (Non-condensing)	
Storage humidity	5% to 95% (Non-condensing)	5% to 95% (Non-condensing)	5% to 95% (Non-condensing)	
Temperature alarm	/	/	/	
Acoustic noise	37.5 dB	45dB	51.8 dB	34.1 dB
Physical specifications				
Dimension(HxWxD)	1.73"x17.32"x11.02" (44x440x280mm)	1.77"x17.32"x11.41" (45x440x208mm)	1.73"x17.32"x11.02" (44x440x280mm)	1.73"x17.32"x11.81"(44x440x300mm)
Rack units(RU)	1 RU	1 RU	1 RU	1 RU
Weight	3.5kg	3.5kg	4.3kg	4.8kg

Description	S3400-24T4SP	S3400-24T4FP	S3400-48T4SP	S3400-48T6SP
Distance	-	-	-	-
Electrical				
Voltage (auto ranging)	100-240VAC	100-240VAC	100-240VAC	100-240VAC
Frequency	50-60Hz	50-60Hz	50-60Hz	50-60Hz
current	7A	7A	6.5A	6.5A
power rating (maximum consumption)	370W/28W (POE is not included)	370W/20W (POE is not included)	370W/47W (POE is not included)	AC: 370W (6.5A, 240V) DC: 740W (15A, 55V)

Mean-time between failures

MTBF(hour)	>50,000	>50,000	>50,000	>50,000
------------	---------	---------	---------	---------

Connectors

Connectors and cabling

- 1/ 10GBASE-T ports: RJ-45 connectors, 4- pair Cat5E/ Cat6/ Cat6a UTP cabling
- SFP transceivers: LC fiber connectors (single-mode or multimode fiber)
- SFP+ transceivers: LC fiber connectors (single-mode or multimode fiber)
- SFP28 transceivers: LC fiber connectors (single-mode or multimode fiber)
- QSFP+ transceivers: MPO and LC fiber connectors (single-mode or multimode fiber)QSFP28 transceivers:
- MPO and LC fiber connectors (single-mode or multimode fiber)
- FS stacking ports: No need for dedicated stacking cables, FS compatible cables or modules can be used for stacking
- Ethernet management port: RJ-45 connectors, 4-pair Cat5 UTP cabling
- Management console port: RJ-45-to-DB9 cable for PC connections

Power connectors

- Customers can provide power to a switch by using the internal power at the back of the switch
- Internal power supply connector: The internal power supply is an auto-ranging unit. It supports input voltages between 100 (115 for 1100WAC) and 240 VAC. Use the supplied AC power cord to connect the AC power connector to an AC power outlet

Standards

Standards 802.1s, 802.1w, 802.1x, 802.1ad, 802.1d, 802.1p, 802.1q, RMON, SNMPV1 V2 V3

Quality certification

At FS, our Quality Commitment lies in all aspects of processes, resources, and methods that enable us to build superior networks for our customers. Through a quality policy focusing on continuous improvement of products and services, we're able to achieve the highest levels of satisfaction for our customers. To that end, every FS employee is accountable for contributing to the value of the products and services we deliver.

Figure 5 shows some of the authoritative certifications obtained by FS S3400 Series Switches.



Figure 5.

Warranty, service and support

FS S3400 Series Switches enjoy 4 years limited warranty against defects in materials or workmanship. For more information for FS Returns & Refunds policy, visit <https://www.fs.com/policies/warranty.html> or https://www.fs.com/policies/day_return_policy.html

FS provides a personal account manager, free professional technical support, and 24/7 live customer service to each customer.

- Professional Lab: Test each product with the latest and advanced networking equipment.
- Free Technical Support: Provide free & tailored solutions and services for your businesses.
- 80% Same-day Shipping: Immediate shipping for in-stock items.
- Fast Response: Direct and immediate assistance from an expert.

For more information, visit https://www.fs.com/service/fs_support.html

Ordering information

Table 8 provides the ordering information for S3400 series switches.

Table 8. ordering information

FS P/N	Product description
Switch hardware	
S3400-24T4SP	S3400 -24T4SP, 24- Port Gigabit Ethernet PoE Switch, 24 x PoE Ports @370W , with 4 x 10Gb SFP+ Uplinks, Support Stacking
S3400-24T4FP	S3400 -24T4FP, 24- Port Gigabit Ethernet L2+ PoE+ Switch, 24 x PoE+ Ports @370W , with 4 x 1Gb Combo Uplinks, Support ERPS
S3400-48T4SP	S3400 -48T4SP, 48- Port Gigabit Ethernet L2+ PoE+ Switch, 48 x PoE+ Ports @370W , with 4 x 10Gb SFP+ Uplinks, AC+DC Power Supplies
S3400-48T6SP	S3400 -48T6SP, 48-Port Gigabit Ethernet L2+ PoE+ Switch, 48 x PoE+ Ports @370W, with 6 x 10Gb SFP+ Uplinks, AC+DC Power Supplies


| Additional information

For more information about the S3400 Series Switches, contact your account manager or visit

https://www.fs.com/search_result?keyword=S3400

| Document history

New or revised topic	Described in	Date
Updates to FS S3400 series Switches Datasheet	Updated all	11/17/2022



Shenzhen (China)

Address: 24F , Yingfeng Center, Haitian 2nd Rd,
Nanshan District, Shenzhen

Tel: +86 (755) 8357 1351

Email: sales@feisu.com

Delaware(united states)

Address: 380 Center point Blvd , New Castle
, DE 19720 , United States

Tel: +1 (888) 468 7419

Email: us@fs.com

Munich(Germany)

Address: NOVA Gewerbepark Building 7, Am
Gfild 7,85375 Neufahrn bei Munich , Germany

Tel: +49 (0) 8165 4099 260

Email: de@fs.com

Singapore

Address: 30A Kallang Pl, # 11- 10/ 11/ 12 Singapore
339213

Tel: +65 6443 7951

Email: sg@fs.com

Wuhan (China)

Address: 9- 14F, Optical Valley Software Park
A7 , Guanshan Ave , Wuhan

Tel: +86 (027) 8808 9195

Email: sales@feisu.com

Birmingham(unitedkingdom)

Address: Regus Edmund House , 12-22 Newhall
Street, Birmingham, B3 3AS

Tel: +49 (0) 8165 4099 260

Email: uk@fs.com

Melbourne(Australia)

Address: 57-59 Edison Rd , Dandenong South ,
VIC 3175 , Australia

Tel: +61 3 9693 3488


Email: au@fs.com

TOKYO(Japan)

Address: JS Progress Building, 4 - 1 - 23 Heiwajima,
Ota-ku, Tokyo 〒143-0006

Tel: 03-5826-8305

Email: jp@fs.com



FS has several offices around the world. Addresses, phone numbers are listed on the FS Website at https://www.fs.com/contact_us.html
FS and FS logo are trademarks or registered trademarks of FS in the U.S. and other countries.